

COOLING

TECHNICAL INFORMATION

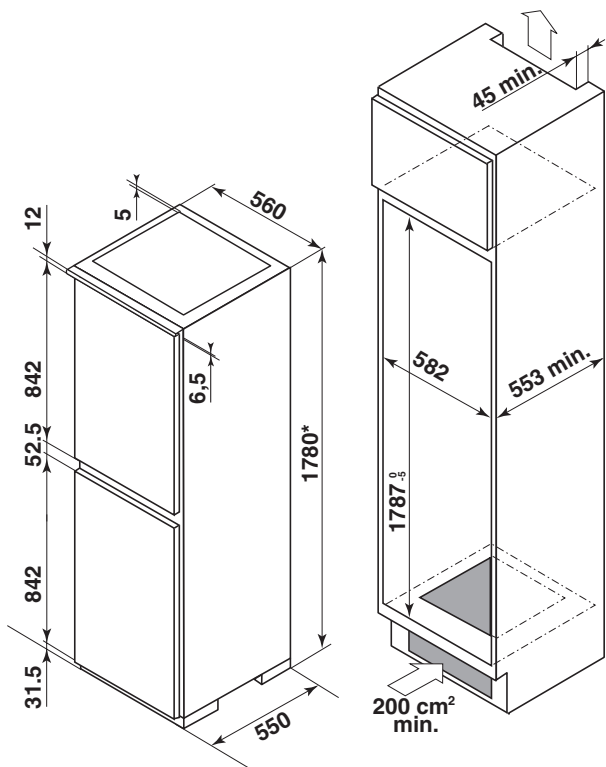
MODEL NUMBER	DRC825JE	DRC728JE	DRS635JE	DFS920JE
	IN-COLUMN FRIDGE WITH 4* FREEZER	IN-COLUMN FRIDGE WITH 4* FREEZER	LARDER FRIDGE	FREEZER
FRIDGE FEATURES				
Defrost	Auto	Auto	Auto	
Anti-bacterial lining	•	•	•	
Temperature control	Elec LCD	Mechanical	Elec LCD	
Interior light	•	•	•	
Auto-fresh	•		•	
Holiday setting	•			
Dairy compartment with lid	•	•	•	
Egg rack	•	•	•	
Door shelves	1	2	3	
Door shelves with lids	2	2	2	
Bottle rack				
Bottle holder & support	1	1	1	
Cheese / cold meat compartment				
Glass shelves full depth	2	3	4	
Glass shelves half depth	2	2	2	
Flexible shelf positions	•	•	•	
Maxi fresh compartment				
Vegetable drawer	2	2	1	
Safety indicator for <4°C	•	•	•	
Fan cooling	•	•	•	
FREEZER FEATURES				
4-star freezer	•	•		•
Frost-free	•			•
Defrost	Auto	Manual		Auto
Adjustable thermostat control	Elec LCD			Elec LCD
Ice cube container	•	•		•
Freezer drawers	3	3		5
Freezer flaps	1			2
Auto-freeze	•			•
Freezer power (kg / 24 hours)	10	13		20
Rising time (hours)	25	20		21
Temperature warning light	•	•		Acoustic
OTHER FEATURES				
Compressors	1	1	1	1
Reversible doors	•	•	•	•
Slider & glider fixing	•	•	•	•
Matching fridge / freezer			DFS920JE	DRS635JE
Fridge freezer split	50 / 50	70 / 30		
Integrated evaporator	•	•	•	•
ENERGY EFFICIENCY INFORMATION				
Climate class*	SN / T	SN	SN / ST	SN / T
Energy rating	A+	A+	A+	A+
Electricity consumption (kW/h / 24 hours)	0.92	0.87	0.40	1.01
Electricity consumption (kW/h / year)	335	318	146	369
Gross volume refrigerator (litres)	164	214	332	
Nett volume refrigerator (litres)	162	210	330	
Gross volume freezer (litres)	81	76		220
Nett volume freezer (litres)	78	70		208
Total gross volume (litres)	255	290	332	220
Total nett volume (litres)	250	280	330	208
Noise level dB(A)	38	36	34	38
ELECTRICAL CONNECTION				
Total connected load (kW)	160	120	90	130
Connection	220-240v / 50Hz	220-240v / 50Hz	220-240v / 50Hz	220-240v / 50Hz
Fuse rating (amps)	13	13	13	13
DIMENSIONS				
Built-in H / W / D (mm)	1780 x 560 x 550	1780 x 560 x 550	1785 x 560 x 550	1780 x 560 x 550
Overall H / W / D (mm)	1775 x 540 x 545	1772 x 540 x 547	1772 x 538 x 533	1772 x 540 x 547
Packed H / W / D (mm)	1860 x 610 x 610	1860 x 610 x 610	1860 x 620 x 600	1840 x 600 x 620
Net weight (kg)	58	58	70	61.5
Gross weight (kg)	63	63	74	66

* Climate class SN: Room temperature between +10°C & + 32°C

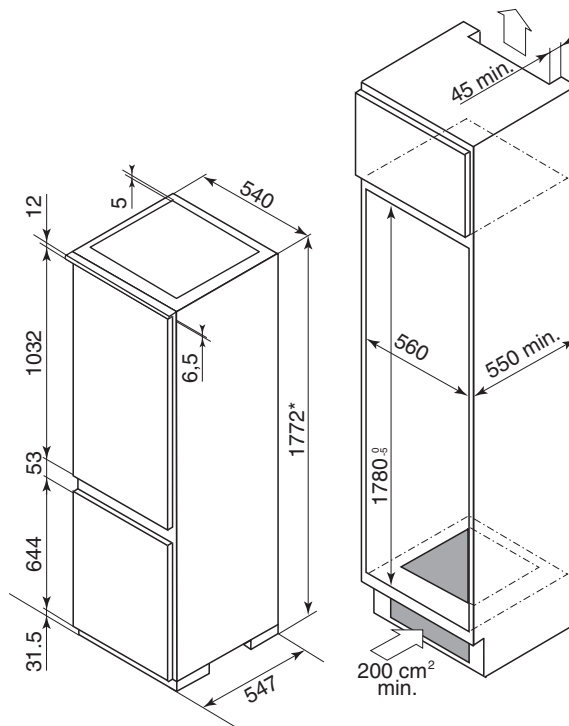
* Climate class ST: Room temperature between +16°C & + 32°C

COOLING TECHNICAL DRAWINGS

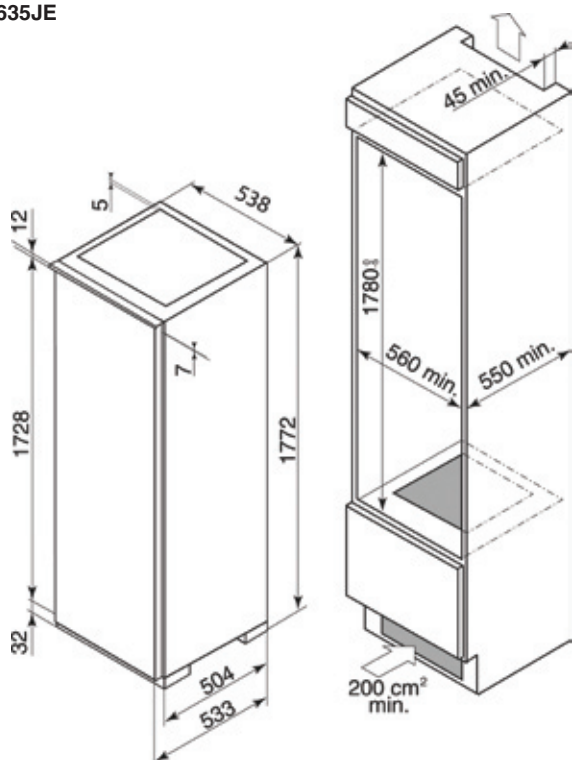
DRC825JE



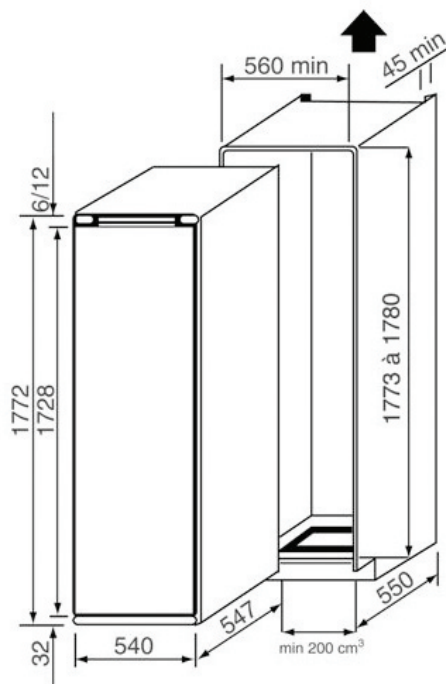
DRC728JE



DRS635JE



DFS920JE



COOLING

TECHNICAL INFORMATION

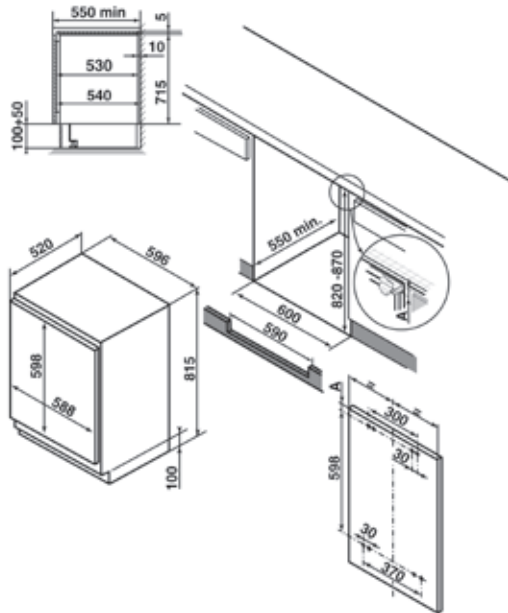
MODEL NUMBER	DRF913JE	DFF910JE	DKA866M
	UNDER COUNTER LARDER FRIDGE	UNDER COUNTER 4* FREEZER	AMERICAN FRIDGE / FREEZER
FRIDGE FEATURES			
Defrost	Auto		Auto
Anti-bacterial lining	•		
Temperature control	Mechanical		Electronic
Interior light			•
Auto-fresh			
Holiday setting			
Dairy compartment with lid	•		
Egg rack	•		
Door shelves	2		4
Door shelves with lids	2		1
Bottle rack			
Cheese / cold meat compartment			•
Glass shelves full depth	2		3
Glass shelves half depth	2		
Flexible shelf positions	•		•
Maxi fresh compartment			1
Vegetable drawer	1		1
Safety Indicator for <4°C	•		
Fan cooling			•
Door open alarm			•
Ice maker (chilled water, ice cubes, crushed ice)			•
FREEZER FEATURES			
4-star freezer		•	•
Frost-free			•
Defrost		Manual	Auto
Adjustable thermostat control		Mechanical	
Ice cube container		•	
Freezer drawers		3	2
Freezer flaps			
Auto-freeze			
Freezer power (kg / 24 hours)		18	10
Rising time (hours)		20	5
Temperature warning light		•	
Door compartment			4
Ice cream shelf			•
Shelves			3
OTHER FEATURES			
Compressors	1	1	1
Reversible doors	•	•	
Hinged door system	•	•	
Slider & glider fixing			
Matching fridge / freezer	DFF910JE	DRF913JE	
Fridge freezer split			60 / 40
Integrated evaporator	•	•	•
ENERGY EFFICIENCY INFORMATION			
Climate class*	SN / ST	SN / ST	SN / ST
Energy rating	A+	A+	A+
Electricity consumption (kg / 24 hours)	0.40	0.57	1.16
Electricity consumption (kWh / year)	146	208	424
Gross volume refrigerator (litres)	142		
Nett volume refrigerator (litres)	140		334
Gross volume freezer (litres)		108	
Nett volume freezer (litres)		100	170
Total gross volume (litres)	142	108	594
Total nett volume (litres)	140	100	504
Noise level dB(A)	37	38	50
ELECTRICAL CONNECTION			
Total connected load (kW)	70	90	220
Connection	220-240v / 50Hz	220-240v / 50Hz	220-240v / 50Hz
Fuse rating (amps)	13	13	13
DIMENSIONS			
Built-in H / W / D (mm)	820-870 x 600 x 550	820-870 x 600 x 550	1805 x 913 x 707
Overall H / W / D (mm)	815-865 x 596 x 520	815-865 x 596 x 520	1790 x 903 x 735 (inc. handles)
Packed H / W / D (mm)	880 x 670 x 600	880 x 670 x 600	1862 x 1008 x 958
Net weight (kg)	34	38	129
Gross weight (kg)	35	39	147

* Climate class SN: Room temperature between +10°C & + 32°C

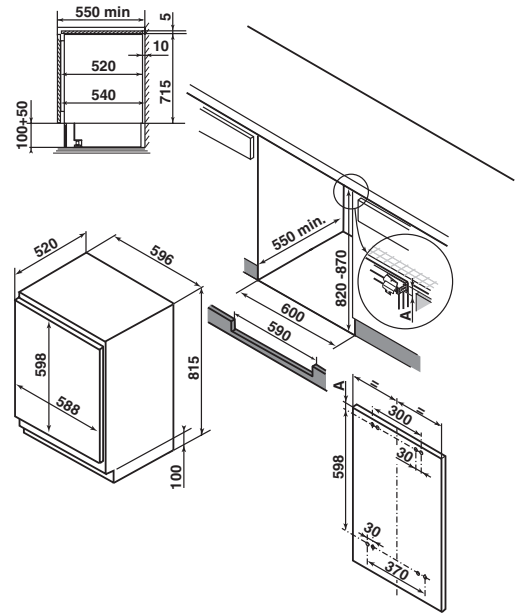
* Climate class ST: Room temperature between +16°C & + 32°C

COOLING TECHNICAL DRAWINGS

DRF913JE



DDF910JE



DKA866M

